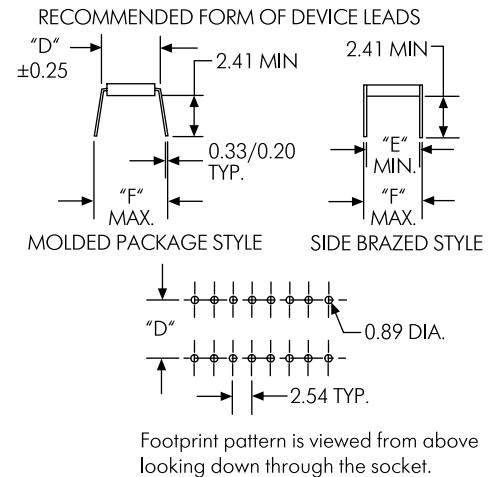
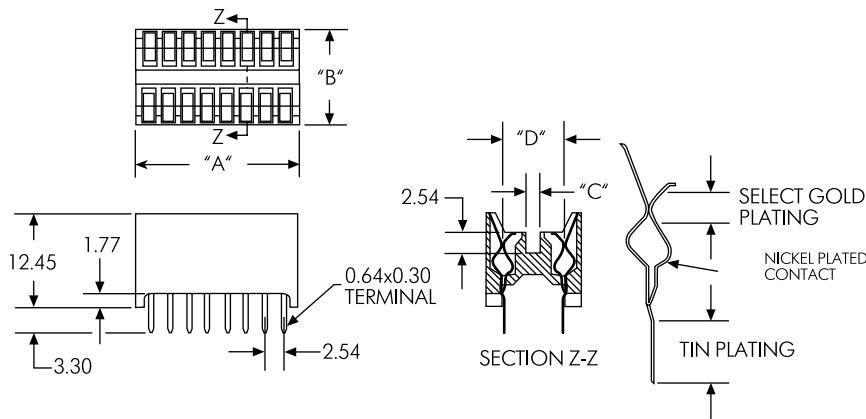


Series 613 "Mid-Rise"

Expanded line of low-cost, high-quality sockets

- Compact size for maximum board density.
- Wide target area for easy entry and removal of IC leads.
- Dual face-wipe contacts for long, dependable life.
- Tin plate on the solder tail to eliminate solder bath contamination.
- Excellent component clearance under the socket.
- Four high corner standoffs for easy inspection and cleaning of the PC board.
- For temperatures up to 150 C; for higher temperature applications consult factory.



Footprint pattern is viewed from above looking down through the socket.

Note: Dimensions shown as inches (millimeters)

Part No.	No. of pins	A	B	C	D	E	F
613-0060316	6	.330 (8.38)	.495 (12.57)	.075 (1.91)	.300 (7.62)	.270 (6.86)	.330 (8.38)
613-0080316	8	.430 (10.92)	.495 (12.57)	.075 (1.91)	.300 (7.62)	.270 (6.86)	.330 (8.38)
613-0140316	14	.730 (18.54)	.495 (12.57)	.075 (1.91)	.300 (7.62)	.270 (6.86)	.330 (8.38)
613-0160316	16	.830 (21.08)	.495 (12.57)	.075 (1.91)	.300 (7.62)	.270 (6.86)	.330 (8.38)
613-0180316	18	.930 (23.62)	.495 (12.57)	.075 (1.91)	.300 (7.62)	.270 (6.86)	.330 (8.38)
613-3180316	18	.930 (23.62)	.595 (15.11)	.175 (4.45)	.400 (10.16)	.370 (9.40)	.430 (10.92)
613-0200316	20	1.030 (26.16)	.495 (12.57)	.075 (1.91)	.300 (7.62)	.270 (6.86)	.330 (8.38)
613-3200316	20	1.030 (26.16)	.595 (15.11)	.175 (4.45)	.400 (10.16)	.370 (9.40)	.430 (10.92)
613-0220316	22	1.130 (28.70)	.495 (12.57)	.075 (1.91)	.300 (7.62)	.270 (6.86)	.330 (8.38)
613-3220316	22	1.130 (28.70)	.595 (15.11)	.175 (4.45)	.400 (10.16)	.370 (9.40)	.430 (10.92)
613-0240316	24	1.230 (31.24)	.495 (12.57)	.075 (1.91)	.300 (7.62)	.270 (6.86)	.330 (8.38)
613-7240316	24	1.230 (31.24)	.795 (20.19)	.375 (9.53)	.600 (15.24)	.570 (14.48)	.630 (16.00)
613-0280316	28	1.430 (36.32)	.495 (12.57)	.075 (1.91)	.300 (7.62)	.270 (6.86)	.330 (8.38)
613-3280316	28	1.430 (36.32)	.595 (15.11)	.175 (4.45)	.400 (10.16)	.370 (9.40)	.430 (10.92)
613-7280316	28	1.430 (36.32)	.795 (20.19)	.375 (9.53)	.600 (15.24)	.570 (14.48)	.630 (16.00)
613-0320316	32	1.630 (41.40)	.495 (12.57)	.075 (1.91)	.300 (7.62)	.270 (6.86)	.330 (8.38)
613-3320316	32	1.630 (41.40)	.595 (15.11)	.175 (4.45)	.400 (10.16)	.370 (9.40)	.430 (10.92)
613-7320316	32	1.630 (41.40)	.795 (20.19)	.375 (9.53)	.600 (15.24)	.570 (14.48)	.630 (16.00)
613-7400316	40	2.030 (51.56)	.795 (20.19)	.375 (9.53)	.600 (15.24)	.570 (14.48)	.630 (16.00)
613-8640316	64	3.230 (82.04)	1.095 (27.91)	.675 (17.15)	.900 (22.86)	.870 (22.10)	.930 (23.62)

TEST SPECIFICATIONS

Contact Insertion Force: 200 grams max. per contact pair. **Contact Withdrawal Force:** 30 grams min. per contact pair. **Temperature Cycling:** 168 hrs. at 200 C. Result: No electrical or mechanical degradation. **Contact Resistance:** 20 milliohms max. at 0.1 ampere. **Moisture Resistance:** 24 hrs. at 85 C, 85% RH. Result: 1000 megohms minimum. **Durability:** 10,000 insertion/withdrawal cycles. Result: No electrical or mechanical degradation.

MATERIALS

Socket body: U.L. 94V-0 rated high temperature material.

Contacts: Beryllium copper

Contact plating: 30 microinches of select gold over 50 microinches of nickel.